



# A GIVING GUIDE

FOR PUBLIC LANDS AND FACILITIES



Gifts that will last for generations to come!

**“CREATING AND LEAVING A LEGACY.”**

**City of McPherson**  
**Public Lands and Facilities**

Wayne Burns, Director  
400 E Kansas Ave | PO Box 1008  
McPherson, KS 67460  
wayneb@mcpcity.com  
www.mcpcity.com



Public Lands & Facilities • 245.2535  
TC Golf Course Clubhouse • 245.2505  
TC Golf Course Maintenance • 241.4707  
Park Supervisor • 245.2565  
Cemetery Sexton • 245.2568  
Tele Fax • 245.2549

January 19, 2021

Investing in our community...

The City of McPherson is in a very exciting time in its history. Involved citizens have always played an essential part in the development of our fine city. We would like to ask for your support in preserving or enhancing our current Public Lands and Facilities department in creating new amenities to continue to improve the quality of life in McPherson. Your gift will be appreciated by present and future generations.

This gift catalog offers many ways YOU can contribute to the continued support of a quality park system, public facilities and enhancing the quality of life in our community. While our suggestions can be viewed as a wish list, the possibilities are endless. They include ways to beautify our park system, promote our community, and create a safer and more enjoyable environment for all ages.

Consider this catalog as an invitation to become involved in sharing with the community and leaving a legacy. Your support is needed and greatly appreciated. Together — the City of McPherson and involved citizens like you — we can build an even better community for all of us.

Community Opportunity! Creating and Leaving a Legacy!

Recreationally Yours,

*Wayne Burns*

Wayne Burns, Director  
Public Lands and Facilities

**PARK SPACES    FUN PLACES    FRIENDLY FACES**  
**CREATING LIFETIME MEMORIES...THROUGH QUALITY FACILITIES!**

Gary Mehl  
COMMISSIONER OF PUBLIC FACILITIES

Thomas A. Brown  
MAYOR

Larry E. Wiens  
COMMISSIONER OF STREETS & UTILITIES



# 10 REASONS TO LEAVE A LEGACY IN YOUR COMMUNITY

- 10 May be an opportunity for publicity through sponsorships and corporate partnerships.
- 9 Gifts can be a source of local matching funds projects.
- 8 Gives you satisfaction knowing that you are making a difference.
- 7 Puts your money to use in your OWN community so you can see the impact.
- 6 Expedites the delivery of parks and recreation resources.
- 5 Opens up funding for other programs, facilities and the acquisition of open space.
- 4 Allows others to benefit from the joy of recreation and parks programs.
- 3 Your gift may be tax deductible.
- 2 Your gift helps stimulate others in the community to improve the community.
- 1 Provides enjoyment and improved quality of life for our citizens!!

## POTENTIAL CAPITAL PROJECTS

- Provide funding or sponsorship for Lights from the Heartland, holiday light displays at Lakeside Park.
- Renovation of the historic band shell in Lakeside Park.
- Turkey Creek Golf Course Clubhouse renovation, including the addition of a 45 x 45 multi-purpose room on the north side of the existing clubhouse.
- Fundraising for new shelters and cabin renovations within our parks.
- Updates and repairs to the McPherson Water Park
- Opportunity to repair and replace playground equipment in our park system.



## INTRODUCTION

This catalog reflects a compilation of needs that might otherwise go unmet and includes timeless gift-giving options for every interest – from recreation equipment, park amenities, maintenance equipment and capital projects. You can choose to honor friends and family or remember a loved one. Those looking for community service activities will find some unique ideas to consider.

Invest today, so that we may serve as a resource to help continue to preserve, promote, and protect our parks and public facilities into and through tomorrow.

### CREATE A LEGACY OF PARKS AND PUBLIC FACILITIES INTO THE FUTURE

The McPherson Parks and Public Facilities Fund is a source for our city to make McPherson a wonderful place to play, learn and explore. Our parks and facilities are a peaceful retreat from the pace and pressures of everyday life. They bring us family picnics, evening swim parties, community celebrations, movies, long walks, historical and wildlife beauty waiting to be discovered.

To ensure our parks are enjoyed for years to come, we need your help. The McPherson Parks and Public

Facilities Fund is a not-for-profit 501c3 organization dedicated to preserving, growing, and enhancing our city's parks and public facilities amenities.

Donations that create a legacy can include cash donations, estate bequests, life insurance, charitable remainder trusts, gifts from IRA accounts and appreciated assets. Your financial advisor is the best source for information on how your gift can support your financial goals today and provide benefit to the City of McPherson Parks and Public Facilities Funds at the MCCF into the future.

Donations can be made for specific parks, public facilities, and amenities within parks. Related projects that we offer are provided below. The fund is administered by the McPherson County Community Foundation. Gifts to the fund are eligible for a tax deduction. The Foundation may be contacted at:



#### MCPHERSON COUNTY COMMUNITY FOUNDATION

1233 N Main St,  
McPherson, KS 67460  
620.245.9070

1.866.245.9070 (toll free)

[www.mcphersonfoundation.org](http://www.mcphersonfoundation.org)

Please contact us if you are considering including parks and facilities in your financial and estate plans. If you have additional questions and ideas for future fundraisers please contact us at (620)245.2535 or 620.245.9070.

## CITY OF MCPHERSON

# MEMORIAL TREE AND BENCH PROGRAM

The City of McPherson Public Lands and Facilities Department invites you to memorialize a special person or life event with a tree or bench located in one of McPherson's beautiful parks or public lands areas.

### HOW IT WORKS:

**1** Complete application online at [https://mccf.fcsuite.com/erp/donate/create?funit\\_id=1229](https://mccf.fcsuite.com/erp/donate/create?funit_id=1229).



**2** After your application is received, you will be contacted by the Park Supervisor and/or the City Forester to finalize the memorial location and details.

**3** Installation will be scheduled, and the tree or bench is ordered. (Payment is required before scheduling of installation)

**4** A letter of acknowledgement will be sent to the donor and this will finalize wording on the bench plaque or tree tag.



## MEMORIAL TREE DONATION

With a tree specific donation, the city will coordinate and plant a tree in honor or in memory of a special person or life event. Memorial trees are a great way to honor a loved one or a special occasion as well as being friendly to our environment. Donors can choose from "flowering tree or shade tree." Then will work with the city forester and local suppliers to determine the best available option for the \$200 donation. Tree species and locations of planting will be subject to Park Department supervisor and city forester. A tree donation lasts the lifetime of the tree. If the tree dies within the first 2 years, it will be replaced at the cost of the City of McPherson. Planting will be done in the spring and the fall only. Decorating or adorning trees is not permitted.

## MEMORIAL BENCH DONATIONS

With a donation of \$1000, the City of McPherson will provide and install an engraved bench in honor or in memory of a special person or event.

The City of McPherson is committed to creating lifetime memories through quality facilities. Memorial tree and bench donations will be used to enhance area Parks and Public facilities.

### FOR MORE INFORMATION CONTACT:

Lauren Przymus, Park Supervisor

☎ 620.245.2565

✉ [lauren@mcpcity.com](mailto:lauren@mcpcity.com)

# HELP RESTORE HISTORY

## HISTORIC AUGUST SAN ROMANI MEMORIAL BAND SHELL

**GOAL \$250,000**

All are invited to create a legacy of McPherson parks and facilities. Please consider participating in the renovation of the historic August San Romani Memorial Band Shell. Your gift to renovate the historic August San Romani Memorial Band Shell will help support other projects, our goal, vision and hope for the future, are not to use taxpayer dollars to complete this historic project.

The City of McPherson is asking the community to participate in our funding for the historic August San Romani Memorial Band Shell stage, exterior and interior wall renovation. The band shell roof was replaced in the fall of 2014.

It may seem hard to believe, but the historic August San Romani Memorial Band Shell turned seventy-five in 2014.

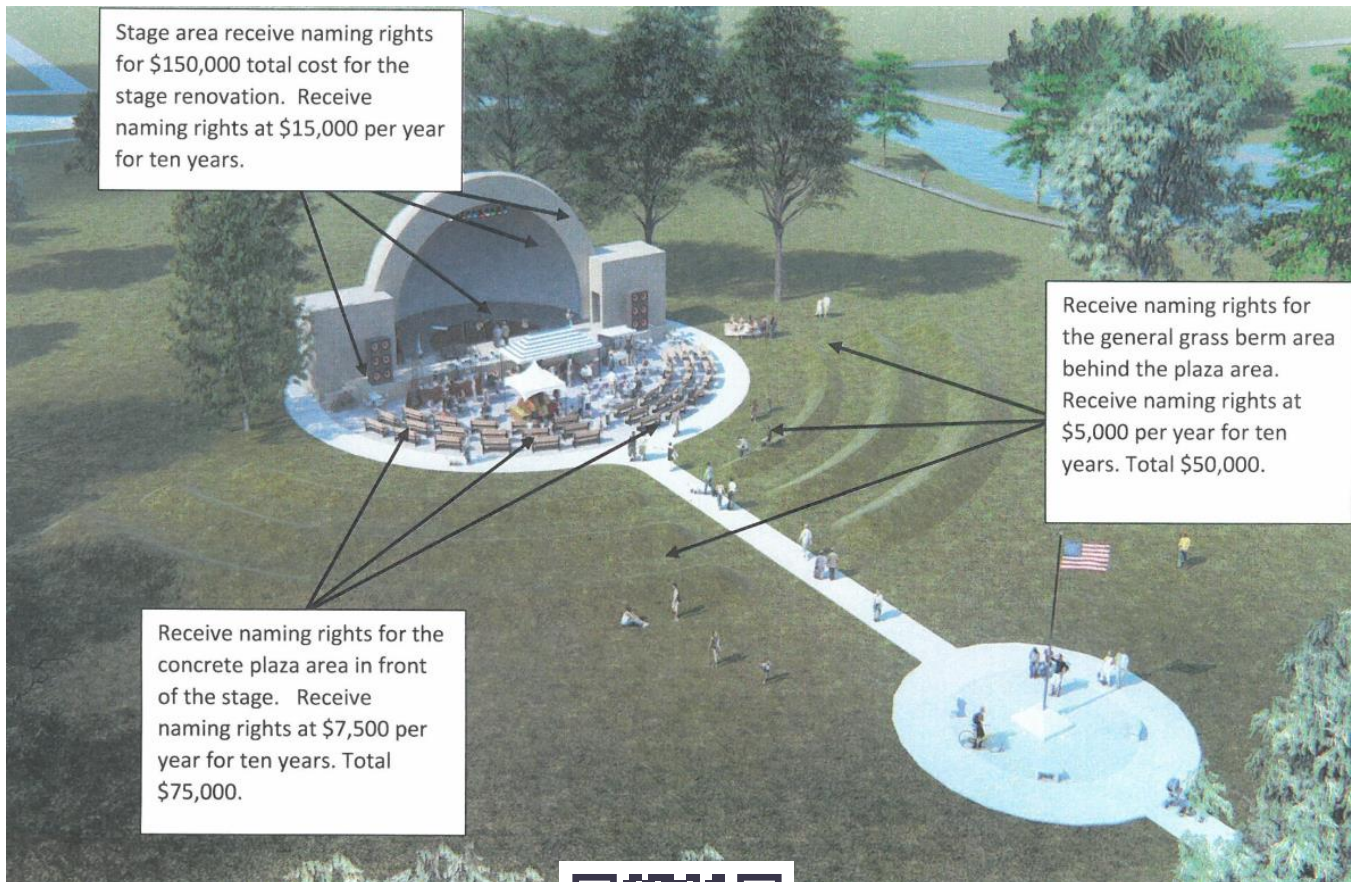
As the 1938 and 1939 annual reports of the City of McPherson explained, "On October 6th, a special election was held at which ... \$38,500 in bonds was voted for the building of swimming pool and band shell in the new east park. This was matched by a government grant in the amount of \$31,140, P.W.A.\* Project Kansas 1403-F making a total of \$67,640 available. Contracts were let and work started in November for the construction of band shell and Hunter Seashore Swimming Pool with construction of swimming pool and bathhouse and band shell being completed

in 1939 at a total cost of \$69,985 of which \$30,396.95 was a government grant".

Designed by the architects Murray and Cayton of Abilene, Kansas, the band shell has proven over the years to be a continuing source for entertainment with a long tradition of music programs and May Fetes to point to with pride.

Today, located on the south side of the band shell's stage, one may still view the original plaque from 1939 commemorating its construction. Some of the notaries listed include Mayor C.E. Booz, Commissioner of Finance & Revenue A.W. Bremyer, City Clerk Ellen Lundstrom and Band Director A. San Romani, for whom the band shell was renamed in 1965.

The Convention and Visitors Bureau have provided numerous entertaining programs for all of our community residents and visitors for a number of years. The city park system, with help from various sources, has maintained the band shell as best as it can. Our park system has become old, worn and tired, it's time to focus on engaging and encouraging the citizens of McPherson and it's leaders to express the community's needs regarding the future of parks and facilities. Working together we will continue to build a strong community and improve the quality of life in McPherson.





# The New **PLAY FOR ALL** Playground at Wall Park

**ALL INCLUSIVE PLAY AREA: GOAL \$125,000**

## **HISTORY OF THE PLAYGROUND:**

In 1988, Farmers' Alliance Insurance and the City of McPherson collaborated to construct the Centennial playground. McPherson children, families and visitors from the region have enjoyed the play area.

## **WHAT HAS HAPPENED?**

In April 2019, Travelers Risk Control representatives toured and evaluated the playground at Wall Park from a liability standpoint. For safety, the Risk Control Reps recommended that the play structure be removed altogether. This piece was installed in 1988 and the 30 plus year old equipment contained a number of safety deficiencies. The limited capacity of the current park budget coupled with the cost of capital projects such as this playground make the need for private partnership critical.

## **WHAT YOU CAN DO:**

This play area is a vital asset to our park and community! The "PLAY FOR ALL" (All inclusive play area) project is a unique opportunity to create a memorable play area for generations to come. We invite you to join us in building an enticing community and family-friendly environment by making a generous TAX-DEDUCTIBLE DONATION. Community donations and support will turn this dream into a reality.

## **LET US MAKE IT HAPPEN TOGETHER!**

We welcome donations in any amount! We hope that our children, young people and families will join in contributing what they can to be part of this project.

**MAKE DONATIONS ONLINE AT:** [https://mccf.fcsuite.com/erp/donate/create?funit\\_id=1229](https://mccf.fcsuite.com/erp/donate/create?funit_id=1229)



**SEND DONATIONS TO:** NEW "PLAY FOR ALL" Playground at Wall Park - All Inclusive Play Area  
McPherson County Community Foundation | 1233 N Main - PO Box 822 | McPherson, KS 67460  
[www.mcphersonfoundation.org](http://www.mcphersonfoundation.org) | 620-245-9070

# WALL PARK DESIGN POSSIBILITIES

## MIRACLE DESIGN #1

This design features Miracle's 4'-10' Mega Tower with a kid favorite 855 degree Typhoon Slide. Ground level play includes a Cylco net spinner, two belt swings, one tot swing and one Generation Swing. Also included a Miracle Exclusive! Miracle Museum Dynamics Lab, Grand Gallery, Momentum Corridor, and two Tranquility Corners.

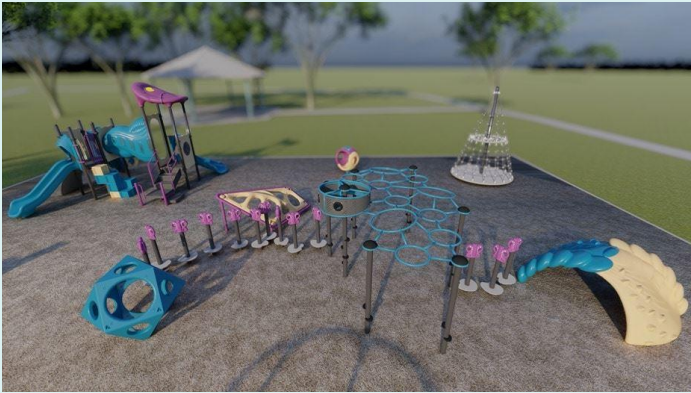


## MIRACLE DESIGN #2

This design features Miracle's Hover Net functionally linked with exciting ground level play including Jax Pack 4, DNA Climber and Chaos Chamber. Also included are the Cylco net spinner, Reflex, Tapered Tower, Tranquility Corner and Miracle's exclusive Miracle Museum Dynamics Lab.



## FRY ASSOCIATES DESIGN #1



## FRY ASSOCIATES DESIGN #2



## FRY ASSOCIATES DESIGN #3



# PICNIC SHELTERS AND PAVILIONS



**SMALL: \$30,500+**  
**LARGE: \$75,000+**

BEYOND DOUBT the most generally useful building in any park is a shelter, usually open but sometimes enclosed or enclosable, and then referred to as a recreation or community building, or a pavilion.

The essentials of a shelter include first of all overhead protection and a place to sit and rest. In size, shelters range from the very small and minor, in a simple rendering, to the large and complicated, when many extra-functional dependencies are included in the ambitious structures of a large, much-used park.



# TENNIS COURT

## CHALLENGER PARK TENNIS COURTS

(Behind Fire Station)

**\$300,000 - \$500,000**

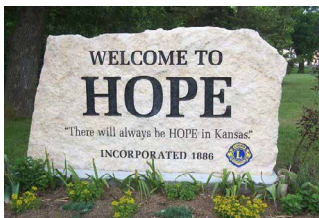
Reconstruction of 4 Existing Asphalt Tennis Courts  
(121 ft. x 300 ft.)

Staff recommends contractor to reconstruct the four (4) Challenger Park tennis courts. The suggested work to include placing a 5-inch post-tensioned concrete overlay on top of the existing asphalt courts. Between the asphalt and P-T overlay would be a 2-inch-thick isolation zone of compacted aggregate. The existing slope of the courts drain water from west to east with enough slope to accommodate the proper movement of surface water.



# PARK SIGNAGE

**\$2,500 - \$4,000**



Signage is a critical component in promoting park safety because people feel safer when they know where they are and how to get to where they want to go. Our approach is to use signage as a tool to encourage a sense of ownership and pride among user groups. To achieve this, signage should be positive, informative and encourage people to enjoy themselves.

Signage can also be used as a tool to educate users about security issues and to encourage them to report suspicious activity. As many crimes are witnessed by people who neither report them nor intervene, signage and information brochures can encourage more direct citizen involvement in keeping parks safe.

Is signage visible from the street? Signs should encourage use by passersby and familiarize users with the park's layout and interior facilities.



# McPHERSON

presents

# LIGHTS

FROM THE


# HEARTLAND



City of McPherson Public Lands and Facilities is offering several very attractive sponsorship packages for the Lights from the Heartland at Lakeside Park.

November 29, 2021 – January 1, 2022

Help light up the Heartland nights and support City of McPherson's Public Lands and Facilities mission!



Lights from The Heartland is a memorable 1.5-mile drive/walk through sparkling holiday lights and beautiful displays with magical animation and illumination! Lights from the Heartland began in 2019 and will continue to grow each year!

# LIGHTS FROM THE HEARTLAND - HOLIDAY LIGHT SHOW 2021

Lights from the Heartland is celebrating our third year November 23 – December 31! Your support will help us make this event a McPherson tradition and a shining success year after year.

## LIGHTS FROM THE HEARTLAND TITLE PARTNERS \$1,500

(10 available)

Logo inside our newest addition, logo and hyperlink on website; social media, marketing, & publicity; sponsorship and logo listed in festival handouts; H-frame at business recognizing support of LIGHTS FROM THE HEARTLAND

## SANTA CLAUS \$1,000

(8 available)

Logo and hyperlink on website; social media, marketing, & publicity; sponsorship and logo listed in festival handouts; H-frame at business recognizing support of LIGHTS FROM THE HEARTLAND

## RUDOLPH \$500

Sponsorship listed on website and sponsorship and logo listed in festival handouts; poster at business recognizing support of LIGHTS FROM THE HEARTLAND

## SLEIGH \$250

Sponsorship listed on website and in festival handouts; poster at business recognizing support of LIGHTS FROM THE HEARTLAND.

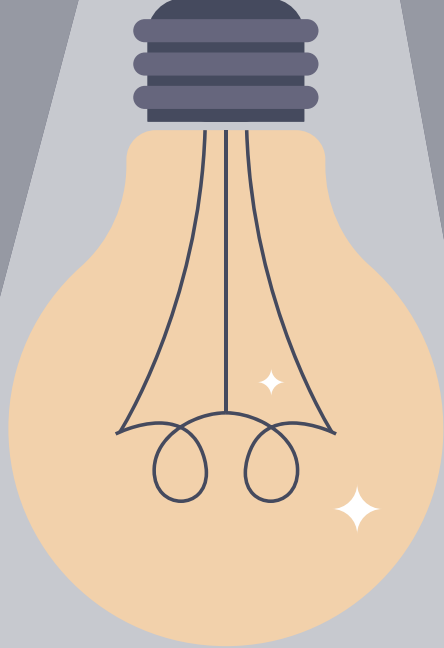
## SNOWFLAKE MEMORIAL DISPLAY \$250.00

Thank you to all our Snowflake sponsors. Your contributions help keep the lights shining bright. For those families and individuals that want to consider becoming a Snowflake sponsor in 2021, your \$250.00 donation can sponsor a Lighted Snowflake! Family member name on 24" x 28" individual sign with spotlight in snowflake of life section.

## QUESTIONS?

☎ Wayne Burns: 620.245.2535

✉ wayneb@mcpcity.com



## WALL PARK DECORATIVE LIGHT REPLACEMENT PRICE: \$2,000+ (per light pole fixture)

Decorative lights are used along sidewalks at all our parks. This is a nice amenity in our community parks. The single most requested physical design modification to improve safety is usually an increase in lighting. Lighting is a key factor because it can clarify the layout of a park by emphasizing walkways, focal points, gathering places and building entrances. When planned as a coordinated system, lighting improves the nighttime legibility, use and enjoyment of a site. Lighting, like signage, is best developed as a hierarchy.

## WE INVITE YOU TO TAKE PART

in making a difference in your community and planning today to give your own special gift. Whether it's a contribution of equipment new/used, money or a gift through estate or financial planning, your support is needed and deeply appreciated – and may be tax deductible. It's more than just giving; it's an investment in present and future generations of children and families who make the City of McPherson their home.

The donation gift catalog provides potential donors with a menu of donation and volunteer opportunities regarding specific Public Lands and Facilities department needs. These needs are provided in an easy-to-read format and present options for direct monetary donations or volunteer service. Donations of any size or scale are welcome; whether you wish to meet a portion of, or an entire need from the catalog. All donations will receive the appropriate recognition for the level of donation.

*For more information about the Giving Guide for Public Lands and Facilities, please contact one of the following people:*

**GARY MEHL**, City Commissioner Public Lands and Facilities

☎ 620.245.2535

✉ [garym@mcpcity.com](mailto:garym@mcpcity.com)

**WAYNE BURNS**, Director Public Lands and Facilities Department

☎ 620.245.2535

✉ [wayneb@mcpcity.com](mailto:wayneb@mcpcity.com)

🌐 [www.mcpcity.com](http://www.mcpcity.com)



# THANK YOU!