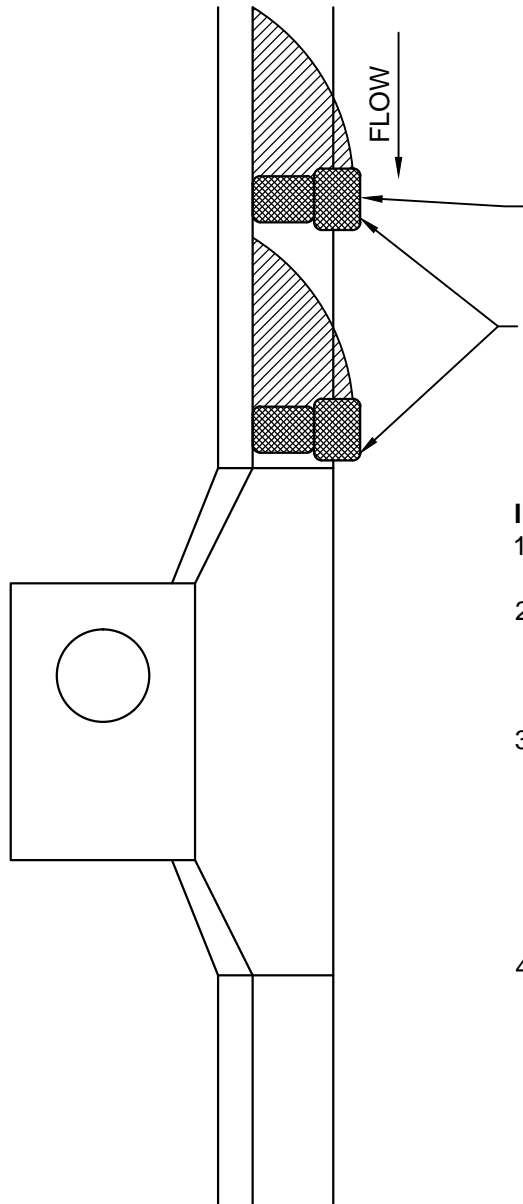


CURB & GUTTER PROTECTION	
STREET GRADE (%)	SPACING (FT)
0.50	100
1.00	50
2.00	25
3.00	16
4.00	13
5.00	10



WHEN USED AS INLET PROTECTION  
A MINIMUM OF 2 SETS OF BAGS  
SHALL BE INSTALLED AS SHOWN.

PLACE TWO (2) OR MORE SETS OF SAND OR  
ROCK FILLED BAGS IN A MANNER THAT RESULTS  
IN MAXIMUM SUPPORT. THE FLOW LINE BAG  
MUST BE LOWER THAN THE TOP OF THE CURB.

#### INSPECTION & MAINTENANCE

1. REMOVE AND REPLACE BAGS IF ANY EVIDENCE OF DAMAGE IS FOUND.
2. BAGS SHOULD BE INSPECTED BEFORE PREDICTED RAIN EVENTS TO PREVENT DAMAGED BAGS OR DEBRIS FROM ENTERING INLET(S).
3. SEDIMENT SHOULD BE REMOVED FROM THE GUTTER AFTER EVERY RAIN EVENT AND SHALL BE REMOVED WHEN ACCUMULATED TO ONE-HALF (1/2) THE HEIGHT OF THE DEVICE. DISPOSE OF SEDIMENT EITHER OFF SITE OR IN AN AREA APPROVED BY THE INSPECTOR.
4. DAMAGED BAGS MAY BLOCK THE INLET CAUSING UNDESIRED FLOODING, PROPERTY DAMAGE AND THREATEN THE HEALTH AND SAFETY OF THE PUBLIC. FOR THIS REASON INSPECTION OF THESE DEVICES IS ESSENTIAL. THE CONTRACTOR ASSUMES ANY LIABILITY FOR DAMAGE OR INJURIES CAUSED BY IMPROPER MAINTENANCE OF EROSION CONTROL DEVICES.

### INLET PROTECTION CURB & GUTTER PROTECTION

EROSION CONTROL DETAILS

INLET PROTECTION

**McPHERSON**  
PUBLIC WORKS DEPARTMENT

FILE: P15\_InletProtection\_2050522.dwg

DRAWN BY: RichardH DATE: 2015-05-26

SCALE: NONE SHEET: 16 OF 100