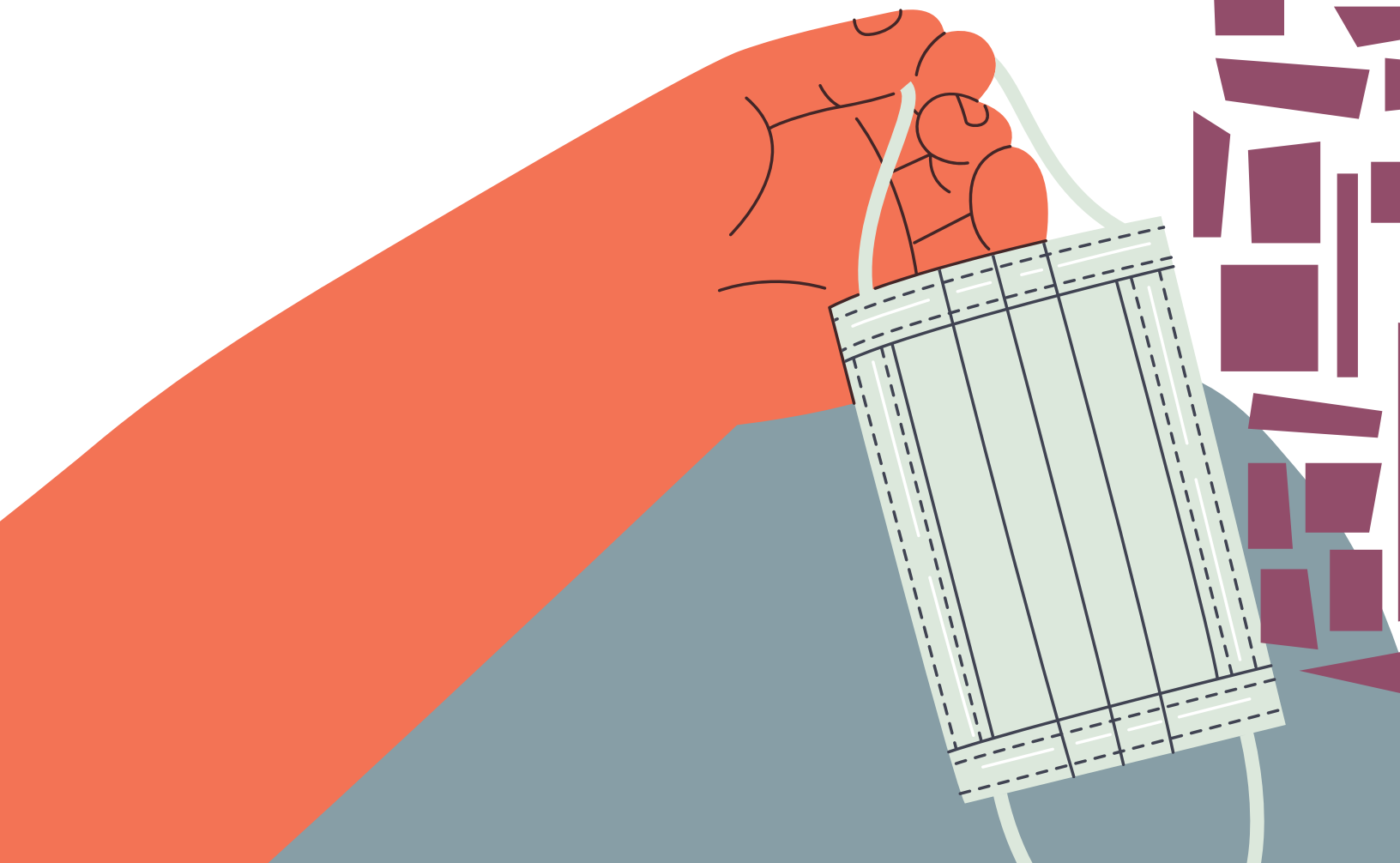


How to safely wear a **MEDICAL MASK**



DO'S:

- Thoroughly wash hands with soap and water before touching the mask
- Find the top side where the metal piece or stiff edge is
- Check the mask for any tears or holes



- Ensure that the colored side faces outwards
- Place the metal piece/stiff edge over your nose
- Adjust the mask without leaving gaps on the side

- Avoid touching the mask
- Cover your mouth, nose, and chin. Screen reader support enabled.
- Use the straps to remove the mask
- Keep the mask away from you or any surface when removing it
- Wash your hands after

SOURCE:

World Health Organization

